

Magnetventile/Solenoid valves

Scem/Parker



Abb. Pict.	Bestell-Nr. Order-No.	Beschreibung Description	Zub.-Kennb. Acc.-letter
1	370057	kpl., 3 Wege, 230VAC cpl., 3 ways, 230VAC	A
2	370062	Ventilkörper Solenoid square pin	A
3	371029	Magnetspule, 230VAC Magnetic coil, 230VAC	A

Lucifer



Abb. Pict.	Bestell-Nr. Order-No.	Beschreibung Description	Zub.-K. Acc.-l.
1	370053	kpl., 3 Wege, 230VAC cpl., 3 ways, 230VAC	A
2	370061	Körper Solenoid square pin	A
3	371031	Magnetspule, 230VAC Magnetic coil, 230VAC	A

ODE

Sirai



Abb. Pict.	Bestell-Nr. Order-No.	Beschreibung Description	Zub.-K. Acc.-l.
1	370203	kpl., 3 Wege, 230VAC cpl., 3 ways, 230VAC	A
2	371150	Magnetspule, 230VAC Magnetic coil, 230VAC	A
3	370168	kpl., 1/8", 2 Wege, 230VAC cpl., 1/8", 2 ways, 230VAC	B
4	371071	Magnetspule, 230VAC Magnetic coil, 230VAC	B

Magnetventile Zubehör/Solenoid valve accessories



Abb. Pict.	Bestell-Nr. Order-No.	Beschreibung Description	Kennb. Letter
1	371091	Stecker/klein Plug/small	B
2	371090	Stecker/groß Plug/big	A
3	371095	O-Ring/viton O-Ring/viton	A
4	371100	O-Ring/Silikon O-Ring/Silicon	A

Magnetventilhalter/Solenoid valve holder

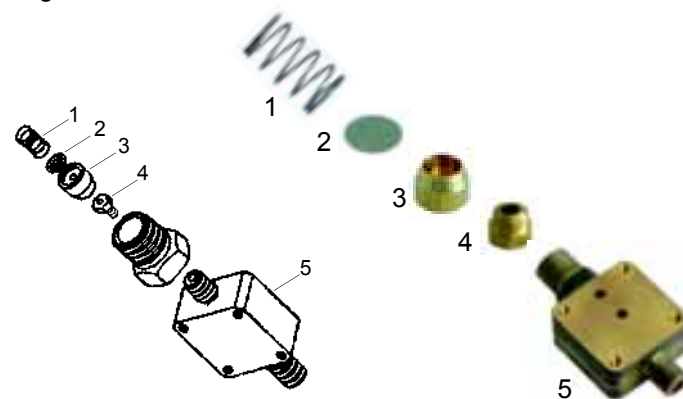


Abb. Pict.	Bestell-Nr. Order-No.	Beschreibung Description
1	528319	Feder Spring
2	528326	Sieb Filter
3	528321	Siebträger Filterholder
4	528486	Düse Nozzle
5	528323	Magnetventilhalter Solenoid valve holder

Pressostate/Schalter/Pressure switches/switches



Abb. Pict.	Bestell-Nr. Order-No.	Beschreibung Description
1	541021	Pressostat Pressure switch
2	520139	Pressostate Membrane Pressure switch membrane
3	346090	Hauptschalter, 32A Main switch, 32A

Schalter/Switches



Abb. Pict.	Bestell-Nr. Order-No.	Beschreibung Description
1	346091	Gruppenschalter Group switch
2	346092	Start Taster Start push button
3	346093	Stop Taster Stop push button
4	345266	Mikroschalter Micro switch

Niveauregler/Level controllers



Abb. Pict.	Bestell-Nr. Order-No.	Beschreibung Description
1	400240	Regler/RL 30/1E-2C/8, 230V Controller/RL 30/1E-2C/8, 230V
2	380137	Sockel, 8-polig Base, 8-pole
3	400241	Regler/RL 30/3ES/F, 230V Controller/RL 30/3ES/F, 230V
4	400020	Niveausonde, 150mm Level probe, 150mm

Tastaturen/Keyboards



Abb. Pict.	Bestell-Nr. Order-No.	Beschreibung Description
1	400376	Folientastatur Push button panel
2	400382	Folienaufkleber Adhesive serigraphy
3	400430	Tastatur Keyboard

Tastaturen/Keyboards

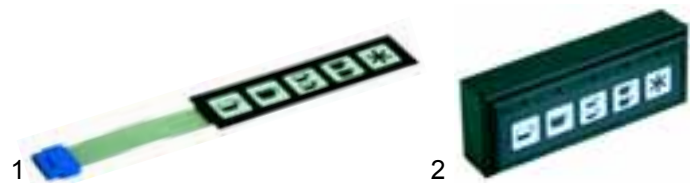


Abb. Pict.	Bestell-Nr. Order-No.	Beschreibung Description
1	400334	Folientastatur Push button panel
2	400378	Tastatur, 9.9.1017 (Gicar) Keyboard, 9.9.1017 (Gicar)

Flowmeter/Flowmeters



Abb. Pict.	Bestell-Nr. Order-No.	Beschreibung Description
1	400004	Flowmeter Flowmeter
2	400256	Stecker Plugs
3	400257	Zählrad Flowmeter reel
4	400258	Gehäusedichtung Case gasket

Heizkörper/Heaters



Abb. Pict.	Bestell-Nr. Order-No.	Beschreibung Description
1	417057	Heizkörper (1 Gruppe) 1500W, 230V Heater (1 group) 1500W, 230V
2	417058	Heizkörper (2 Gruppen) 2500W, 230V Heater (2 groups) 2500W, 230V
3	528021	Heizkörperdichtung (Teflon) Gasket for Heaters (Teflon)

1 Heizkörper/Heaters

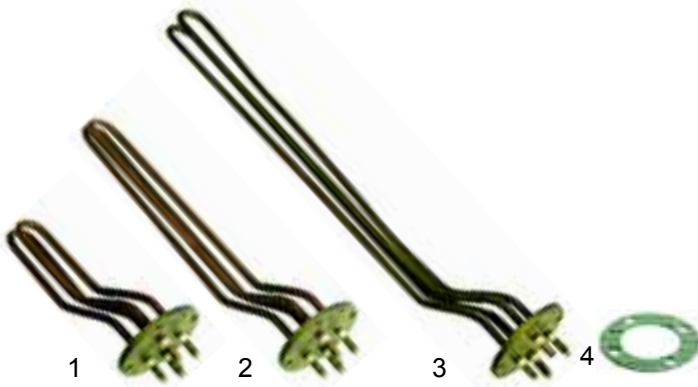


Abb. Pict.	Bestell-Nr. Order-No.	Beschreibung Description
1	417055	Heizkörper (1 Gruppen), 2000W, 230V Heater (1 groups), 2000W, 230V
2	417056	Heizkörper (2 Gruppen), 2500W, 230V Heater (2 groups), 2500W, 230V
3	417091	Heizkörper (3 Gruppen) 4000W, 230V Heater (3 groups), 4000W, 230V
4	528020	Heizkörperdichtung (Klingerit) Gasket for Heaters (Klingerit)

Kesseldichtungen/Pot gaskets



Abb. Pict.	Bestell-Nr. Order-No.	Beschreibung Description
1	528159	Kesseldichtung, 10 Löcher (Klingerit) Pot gasket, 10 holes (Klingerit)
2	528160	Kesseldichtung 9 Löcher (Teflon) Pot gasket, 9 holes (Teflon)

Manometer/Manometers



Abb. Pict.	Bestell-Nr. Order-No.	Beschreibung Description
1	541234	Manometer, Doppelskala, 1/8" Manometer, double scale, 1/8"
2	541274	Manometer, 0 - 3bar Manometer, 0 - 3bar
3	541410	Manometer, Doppelskala, 1/8" Manometer, double scale, 1/8"

Ventile/Valves



Abb. Pict.	Bestell-Nr. Order-No.	Beschreibung Description
1	529312	Sicherheitsventil, 1,8bar, 3/8" Safety valve, 1,8bar, 3/8"
2	529316	Sicherheitsventil/plombiert, 1,8bar, 3/8" Safety valve/sealt, 1,8bar, 3/8"
3	529303	Entlüftungsventil, 1/4" Empty valve, 1/4"
4	529304	Entlüftungsventil, 1/4" Empty valve, 1/4"
5	529349	Cu-Dichtung, 3/8" Cu-gasket, 3/8"
6	529361	Cu-Dichtung, 1/4" Cu-gasket, 1/4"

Wasserstandsglas/Level glass



Abb. Pict.	Bestell-Nr. Order-No.	Beschreibung Description
1	529423	Wasserstandsglas Level glass
2	529424	Wasserstandsglasdichtung Level glass gasket
3	529409	Druckscheibe Pressure washer
4	529425	Wasserstandsglasfeder Level glass spring

Ventile/Valves



Abb. Pict.	Bestell-Nr. Order-No.	Beschreibung Description
1	529329	Expansionsventil, 3/8" Expansion valve, 3/8"
2	529301	Rückschlagventil, 3/8" Non-return valve, 3/8"

Wasserfüllventil/Water intake valve

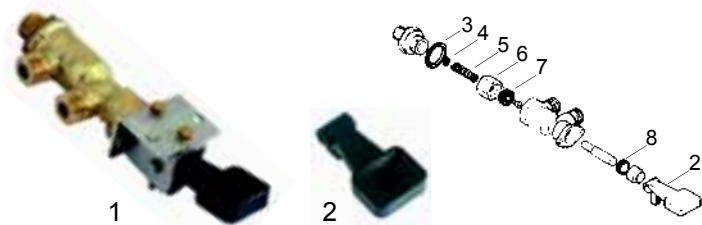


Abb. Pict.	Bestell-Nr. Order-No.	Beschreibung Description
------------	-----------------------	--------------------------

1	529514	Wasserfüllventil komplett Water intake valve assembly
2	111140	Griff Knob



3	528325	Dichtung Gasket
4	528326	Sieb Filter
5	528327	Feder Spring
6	528328	Dichtungsträger Gasketholder
7	528308	Dichtung Gasket
8	528330	Wellendichtung Shaft gasket

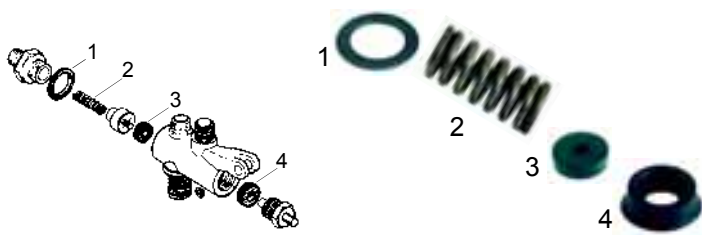


Abb. Pict.	Bestell-Nr. Order-No.	Beschreibung Description
------------	-----------------------	--------------------------

1	528329	Dichtung Gasket
2	528331	Feder Spring
3	528308	Dichtung Gasket
4	528332	Wellendichtung Shaft gasket

Hähne/Taps



Abb. Pict.	Bestell-Nr. Order-No.	Beschreibung Description
------------	-----------------------	--------------------------

1	529680	Hahn komplett, Dampf/Wasser Tap complete, steam/Water
2	111141	Griff, Dampf Knob, steam
3	111142	Griff, Wasser Knob, water

Hähne/Taps

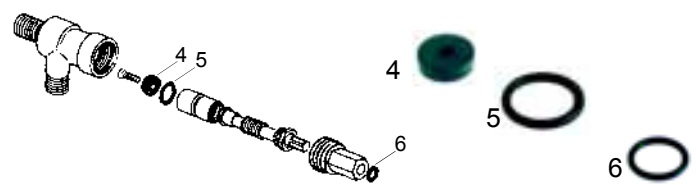


Abb. Pict.	Bestell-Nr. Order-No.	Beschreibung Description
------------	-----------------------	--------------------------

4	528308	Dichtung, 15 x 4 x 4mm Gasket, 15 x 4 x 4mm
5	528333	Dichtung Gasket
6	528478	O-Ring/Wellen- O-ring/shaft-

Rohre/Pipes

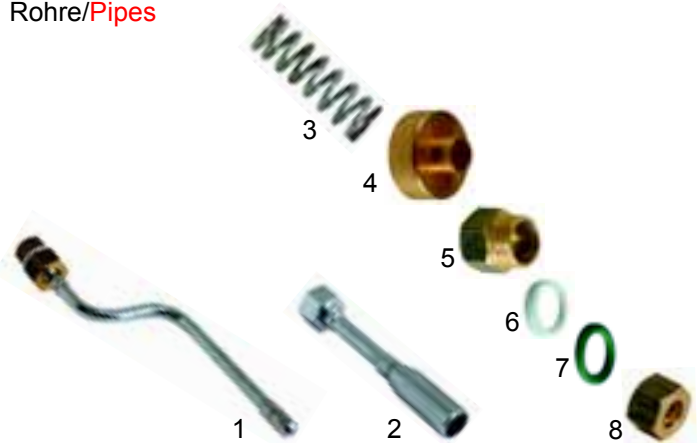


Abb. Pict.	Bestell-Nr. Order-No.	Beschreibung Description
------------	-----------------------	--------------------------

1	529681	Dampfrohr Steampipe
2	529629	Wasserrohr/neu Waterpipe/new
3	528335	Feder Spring
4	529731	Federteller Pipe cap
5	529733	Überwurfschraube Pipe upper nut
6	528336	Dichtung Gasket
7	528222	O-Ring (Silikon) O-ring (silicon)
8	528337	Überwurfmutter Union nut

Passend für/Suitable for Aurora

1 Ablaufwanne/Drain tap



Pos. Item	Bestell-Nr. Order-No.	Beschreibung Description
1	528601	Ablaufwanne Drain tap

Gruppe/Group

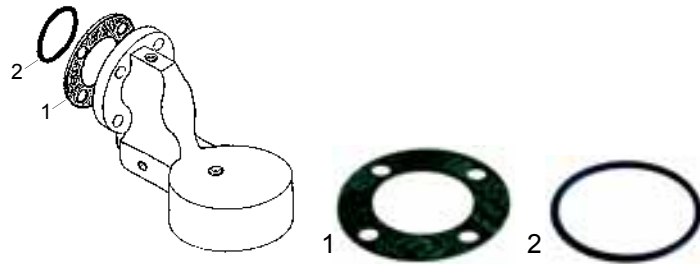


Abb. Pict.	Bestell-Nr. Order-No.	Beschreibung Description
1	528338	Gruppendichtung Group gasket
2	528339	Gruppen-O-Ring Group O-ring

Siebträgerdichtungen/Holder gaskets



Abb. Pict.	Bestell-Nr. Order-No.	Beschreibung Description
1	528050	Distanzeinlage Shim gasket
2	528049	Siebträgerdichtung/72 x 56 x 9mm Filter holder gasket/72 x 56 x 9mm

Dusche, Blindfilter/Shower, blindfilter



Abb. Pict.	Bestell-Nr. Order-No.	Beschreibung Description
1	529130	Wasserverteiler Water dispersion
2	529092	Dusche Shower
3	529023	Blindfilter Blindfilter

Siebe/Filter



Abb. Pict.	Bestell-Nr. Order-No.	Beschreibung Description
1	529012	Sieb/1 Tasse (6g) Filter/1 cup (6g)
1	529011	Sieb/1 Tasse (7g) Filter/1 cup (7g)
2	529014	Sieb/2 Tassen (12g) Filter/2 cups (12g)
2	529013	Sieb/2 Tassen (14g) Filter/2 cups (14g)
3	529079	Siebträgerfeder Filterholder spring

Siebträger/Filterholder



Abb. Pict.	Bestell-Nr. Order-No.	Beschreibung Description
1	529072	Siebträger, M12 Filterholder, M12
2	529044	Siebträgergriff, M12 Filterholder handle, M12

Ausläufe/Spouts



Abb. Pict.	Bestell-Nr. Order-No.	Beschreibung Description
1	529001	Auslauf 3/8", 1 Weg lang Spout 3/8", one way long
2	529003	Auslauf 3/8", 1 Weg gebogen Spout 3/8", one way curved
3	529007	Auslauf 3/8", 2 Wege kurz Spout 3/8", two way short