

Magnetventile/Solenoid valves

Scem/Parker



Abb. Pict.	Bestell-Nr. Order-No.	Beschreibung Description	Vergl.-Nr. Comp.-No.
1	370057	Ventil/kpl., 3 Wege, 230VAC Valve/cpl., 3 Wege, 230VAC	
2	370062	Ventilkörper, 3 Wege Solenoid square pin, 3 ways	
3	370206	Ventil/kpl., 2 Wege, 1/8", 230VAC Valve/cpl., 2 ways, 1/8", 230VAC	
4	371029	Magnetspule, 230VAC Magnetic coil, 230VAC	

Lucifer



Abb. Pict.	Bestell-Nr. Order-No.	Beschreibung Description	Vergl.-Nr. Comp.-No.
1	370053	Ventil/kpl., 3 Wege, 230VAC Valve, 3 ways, 230VAC	7702204
2	370061	Ventilkörper, 3 Wege Solenoid square pin, 3 ways	7703001
3	370071	Ventil/kpl., 2 Wege, 1/8", 230VAC Valve/cpl., 2 ways, 1/8", 230VAC	
4	371031	Magnetspule, 230VAC Magnetic coil, 230VAC	7630306

Sirai



Abb. Pict.	Bestell-Nr. Order-No.	Beschreibung Description	Vergl.-Nr. Comp.-No.
1	370080	Ventil/kpl., 3 Wege, 230VAC Valve, 3 ways, 230VAC	7702210
2	370210	Ventil, 3 Wege, 1/8", 230VAC Valve, 3 ways, 1/8", 230VAC	7702305
3	370168	Ventil/kpl., 2 Wege, 1/8", 230VAC Valve/cpl., 2 ways, 1/8", 230VAC	7702303

Sirai



Abb. Pict.	Best.-Nr. Ord.-No.	Beschreibung Description	Vergl.-Nr. Comp.-No.
1	371047	Spule, 230V Coil, 230V	7630322
2	371071	Spule, 230V Coil, 230V	7630303

Magnetventile Zubehör/Solenoid valve accessories



Abb. Pict.	Bestell-Nr. Order-No.	Beschreibung Description	Vergl.-Nr. Comp.-No.
1	371090	Stecker/groß Plug/ big	7631506
2	371091	Stecker/klein Plug/ small	7631504
3	371095	O-Ring/viton O-Ring/viton	7496018
4	371100	O-Ring/Silikon O-Ring/Silicon	

Pressostate/Schalter/Pressure switches/switches



Abb. Pict.	Bestell-Nr. Order-No.	Beschreibung Description	Vergl.-Nr. Comp.-No.
1	541021	Pressostat, 3-polig Pressure switch, 3 poles	7433001
2	541151	Pressostat, 1,1bar Pressure switch, 1,1bar	7433003
2	541152	Pressostat, 1/4", 1,0bar Pressure switch, 1/4", 1,0bar	7433002
3	541153	Pressostat, 1/4", 1,2bar Pressure switch, 1/4", 1,2bar	7433007

Schütze, Relais/Contactor, relays



Abb. Pict.	Bestell-Nr. Order-No.	Beschreibung Description	Vergl.-Nr. Comp.-No.
1	380353	Hilfskontakt Auxiliary contact	7631801
2	380352	Schutz, 230V Contactor, 230V	7636902
3	380185	Relais Relay	7635410

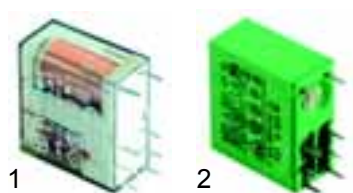


Abb. Pict.	Bestell-Nr. Order-No.	Beschreibung Description	Vergl.-Nr. Comp.-No.
1	380348	Relais, 1-pol-Wechsler, 12VDC Relay, 1-pole changer, 12VDC	7635416 7635413
2	380349	Relais, 2-pol-Wechsler, 24VDC Relay, 2-pole changer, 24VDC	7635414

Thermostate/Thermostats

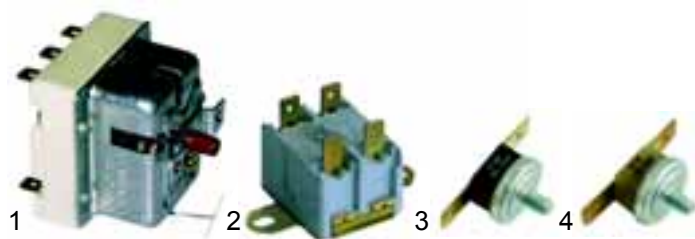


Abb. Pict.	Bestell-Nr. Order-No.	Beschreibung Description	Vergl.-Nr. Comp.-No.
1	390166	Sicherheitsthermostat, 3-polig Safety thermostat, 3 poles	7434001
2	390411	Anlegethermostat, 2-polig, 130°C Stoke thermostat, 2 poles, 130°C	7434002
2	390325	Anlegethermostat, 2-polig, 115°C Stoke thermostat, 2 poles, 115°C	7634807
3	390414	Anlegethermostat, 140°C Stoke thermostat, 140°C	7634815
4	390413	Anlegethermostat, 100°C Stoke thermostat, 100°C	7634805
4	390412	Anlegethermostat, 80°C Stoke thermostat, 80°C	7634806

Zeitschalter/Timer



Abb. Pict.	Bestell-Nr. Order-No.	Beschreibung Description	Gerätetyp Device type	Vergl.-Nr. Comp.-No.
1	350048	Zeitschalter, 75sec. Timer, 75sec.	TBP...	7667501
2	111011	Skala/Scheibe Scale/washer	TBP...	5522032
3	110365	Knebel Knob	TBP...	7371503

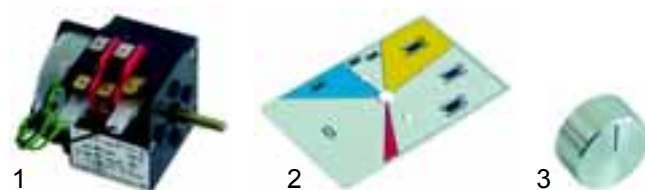


Abb. Pict.	Bestell-Nr. Order-No.	Beschreibung Description	Gerätetyp Device type	Vergl.-Nr. Comp.-No.
1	350042	Zeitschalter, 230V Timer, 230V	TBP...NT Verticale	7667012
2	111164	Skala/Scheibe Scale/washer	TBP...NT Verticale	5522031
3	111165	Knebel Knob	TBP...NT Verticale	7371505

Schalter/Switches



Abb. Pict.	Bestell-Nr. Order-No.	Beschreibung Description	Vergl.-Nr. Comp.-No.
1	346013	Schalter, 0 - I, 2-polig, 25A Switch, 0 - I, 2 poles, 25A	7633306
2	346014	Schalter, 0 - I, 2-polig, 32A Switch, 0 - I, 2 poles, 32A	7633315
3	346015	Schalter, 0 - I - II, 2-polig, 25A Switch, 0 - I - II, 2-pole, 25A	7633305 7633301
4	346016	Schalter, 0 - I - II, 4-polig, 25A Switch, 0 - I - II, 4 poles, 25A	7633311 7633302

Schalter/Switches



Abb. Pict.	Bestell-Nr. Order-No.	Beschreibung Description	Vergl.-Nr. Comp.-No.
1	111143	Knebel/grau Knob/grey	5973025
2	111144	Knebel/blau Knob/blue	5973026
3	110205	Knebel Knob	



Abb. Pict.	Bestell-Nr. Order-No.	Beschreibung Description	Vergl.-Nr. Comp.-No.
1	301002	Schalter/gelb Switch/yellow	7633308
2	301003	Schalter/grün Switch/green	7633309
3	301060	Schalter/LED/rot, 230V Switch/LED/red, 230V	7633313



Abb. Pict.	Bestell-Nr. Order-No.	Beschreibung Description	Vergl.-Nr. Comp.-No.
1	345163	Taster/gelb, 230V Push button/yellow, 230V	
2	345162	Schalter/gelb, 25mm, 230V Switch/yellow, 25mm, 230V	7633303
3	345161	Schalter/grün, 25mm, 230V Switch/yellow, 25mm, 230V	7633304

Schalter/Switches



Abb. Pict.	Bestell-Nr. Order-No.	Beschreibung Description	Vergl.-Nr. Comp.-No.
1	345266	Mikroschalter Micro switch	
2	346061	Schalter, 2-polig Switch, 2 poles	

Signallampen/Signal lamps



Abb. Pict.	Bestell-Nr. Order-No.	Beschreibung Description	Vergl.-Nr. Comp.-No.
1	359142	Grün, 13mm, 230V Green, 13mm, 230V	7633610
2	359143	Gelb, 13mm, 230V Yellow, 13mm, 230V	7633609
3	359004	Grün, 6mm, 230V Green, 6mm, 230V	7633602
4	359005	Gelb, 6mm, 230V Yellow, 6mm, 230V	7633604
5	359009	Rot, 6mm, 230V Red, 6mm, 230V	7633606

Niveauregler/Level controllers



Abb. Pict.	Bestell-Nr. Order-No.	Beschreibung Description	Vergl.-Nr. Comp.-No.
1	400240	RL30/1E-2C/8	7661025
2	380137	Sockel, 8-pol Base, 8 poles	7635415
3	400246	RL30/1E/F	7661027



Abb. Pict.	Bestell-Nr. Order-No.	Beschreibung Description	Vergl.-Nr. Comp.-No.
1	400639	Schlüsselschalter/kpl. Key switch/cpl.	7661503
2	400641	Schlüsselschalter Key switch	7661501

Passend für/Suitable for Bezzera 1

Tastaturen/Keyboards

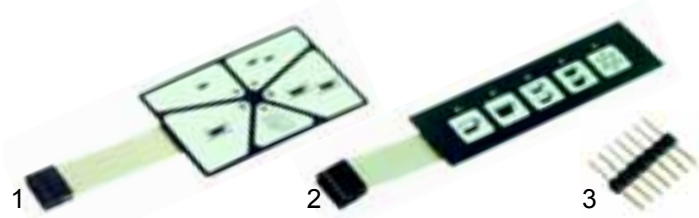


Abb. Pict.	Bestell-Nr. Order-No.	Beschreibung Description	Gerätetyp Device type	Ver.-Nr. Com.-No.
1	400643	Folientastatur Push button panel	TEB...N	5660510
2	400644	Folientastatur Push button panel	DEB...MPN	5660508
3	400648	Stift, 7-polig Pin, 7 poles	-	7636603

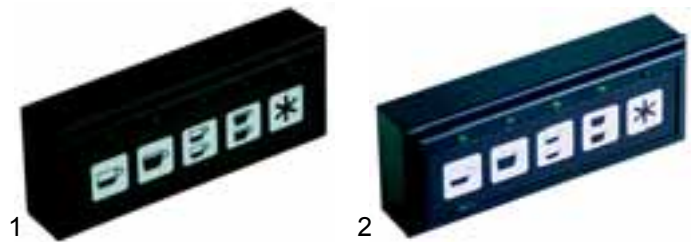


Abb. Pict.	Bestell-Nr. Order-No.	Beschreibung Description	Gerätetyp Device type	Ver.-Nr. Com.-No.
1	400362	Tastatur, 99.12.00 Keyboard, 99.12.00	DEB...MP	7665003
2	400389	Tastatur, 99.12.01 Keyboard	VERTICALE DE	7665001

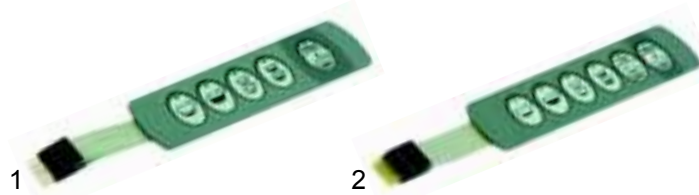


Abb. Pict.	Best.-Nr. Ord.-No.	Beschreibung Description	Gerätetyp Device type	Ver.-Nr. Com.-No.
1	400435	5 Tasten 5 push buttons	ELLISSE DE	5660502
2	400434	6 Tasten 6 push buttons	ELLISSE DE	5660501

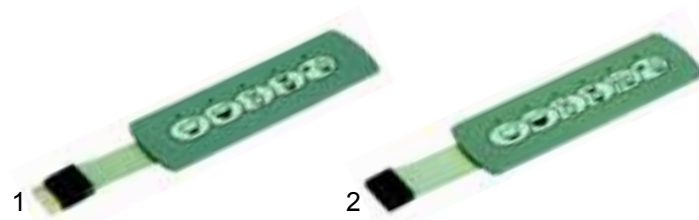


Abb. Pict.	Best.-Nr. Ord.-No.	Beschreibung Description	Zentraleinheit Electronic box	Ver.-Nr. Com.-No.
1	400432	5 Tasten 5 push buttons	ELLISSE TE	5660504
2	400433	6 Tasten 6 push buttons	ELLISSE TE	5660505



Abb. Pict.	Bestell-Nr. Order-No.	Beschreibung Description	Gerätetyp Device type	Ver.-Nr. Com.-No.
1	400645	Rahmen/grau Frame/grey	ELLISSE DE	53272701
2	400646	Rahmen/blau Frame/blue	ELLISSE TE	53272702



Abb. Pict.	Bestell-Nr. Order-No.	Beschreibung Description	Gerätetyp Device type	Ver.-Nr. Com.-No.
1	400640	Stift, 4-polig Pin, 4 poles	-	-
3	400648	Stift, 7-polig Pin, 7 poles	-	7636603
3	400649	Stifte, 8-pol. Pin, 8 poles	-	7636601

Elektronik/Electronics



Pos. Item	Best.-Nr. Ord.-No.	Beschreibung Description	Gerätetyp Device type	Ver.-Nr. Com.-No.
1	400634	1 - 3 Gr., Zeitsteuerung 1 - 3 gr., Time control	TEB...N ELLISSE TE	7662557, 7662520, 7662558, 7662553, 7662559, 7662526
2	400637	1 - 3 Gr., Zeitsteuerung + Schlüssel 1 - 3 gr., Time control + key	TEB...N ELLISSE TE	7662529, 7662566, 7662532, 7662567, 7662535, 7662568
3	400399	1 - 3 Gr., 1.11.'99 bis 1 - 3 gr., 1.11.'99 to	DEB...MPN ELLISSE DE	7662511, 7662502, 7662514, 7662505, 7662517, 7662508

Elektronik/Electronics



Abb. Pict.	B.-Nr. O.-No.	Beschreibung Description	Gerätetyp Device type	Ver.-Nr. Com.-No.
1	400397	2 Gr., bis 30.10.'99 2 gr., till 30.10.'99	DEB...MPN	7662576
1	400398	3 Gr., bis 30.10.'99 3 gr., till 30.10.'99	DEB...MPN	7662577
2	400392	1 - 2 Gruppen 1 - 2 groups	DEB...MP	7662583, 7662584, 7662591, 7662592, 7662595, 7662596
VERTICALE DE				
2	400406	3 Gruppen 3 groups	DEB..MP	7662585, 7662593, 7662597
VERTICALE DE				

Tastatur + Elektronik/Keyboard + electronics

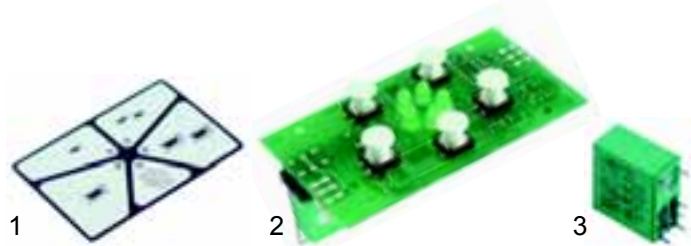


Abb. Pict.	Bestell-Nr. Order-No.	Beschreibung Description	Gerätetyp Device type	Vergl.-Nr. Comp.-No.
1	400630	Folientastatur Push button panel	TEB	5660509
2	400608	Tastatur Keyboard	TEB	7667011
3	380349	Relais Relay	TEB	7635414



Abb. Pict.	Bestell-Nr. Order-No.	Beschreibung Description	Zentraleinheit Electronic box	Ver.-Nr. Com.-No.
1	400647	Folientastatur Push button panel	BZ...E	5660506
2	400388	Zentraleinheit Electronic box	BZ...EMG	7662616

Tastatur + Elektronik/Keyboard + electronics



Abb. Pict.	Bestell-Nr. Order-No.	Beschreibung Description	Gerätetyp Device type	Ver.-Nr. Com.-No.
1	400431	Tastatur Keyboard	ELLISSE P	5660505
2	400407	Zentraleinheit Electronic box	ELLISSE P	7662538, 7662541, 7662544

Flowmeter/Electronic, Flowmeter



Abb. Pict.	Bestell-Nr. Order-No.	Beschreibung Description	Vergl.-Nr. Comp.-No.
1	400004	Flowmeter, 1/4" Flowmeter, 1/4"	7431001
2	400256	Stecker Plugs	7631501
3	400257	Zählrad Flowmeter reel	
4	400258	Gehäusedichtung Case gasket	7496020

Passend für/Suitable for Bezzera

Heizkörper/Heaters



Abb. Pict.	Best.-Nr. Ord.-No.	Beschreibung Description	Gerätetyp Device type	Vergl.-Nr. Comp.-No.
1	417050	1 Gr., 2000W, 230V 1 gr., 2000W, 230V		5722220
2	417051	2 Gr., 3000W, 230V 2 gr., 3000W, 230V		5722221
2	417163	2 Gr., 3000W, 230V 2 gr., 3000W, 230V	Compact	5722215
3	417094	3 Gr., 5000W, 230V 3 gr.s, 5000W, 230V		5722222
4	528019	Heizkörperdichtung Gasket for heaters		5492006



Abb. Pict.	Best.-Nr. Ord.-No.	Beschreibung Description	Gerätetyp Device type	Vergl.-Nr. Comp.-No.
1	417049	1 Gr., 1350W, 230V 1 gr., 1350W, 230V	BZ 35 BZ 40	5722208
2	528018	Heizkörperdichtung Gasket for heaters	BZ 99	5492004
3	417168	1 Gr., 1200W, 230V 1 gr., 1200W, 230V		5722205
4	528181	Kesseldichtung Pot gasket		7496040



Abb. Pict.	Best.-Nr. Ord.-No.	Beschreibung Description	Gerätetyp Device type	Vergl.-Nr. Comp.-No.
1	417169	3000W/230V	Verticale	5722212
2	510420	Cu-Dichtung Cu-gasket		5221848
3	361182	Mutter, 1/4" Nut, 1/4"		5221821

Kesseldichtungen/Pot gaskets



Abb. Pict.	Bestell-Nr. Order-No.	Beschreibung Description	Vergl.-Nr. Comp.-No.
1	528183	10 Löcher, Ø205 x 150mm 10 holes, Ø205 x 150mm	5492006
2	528125	Ø172 x 150mm Ø172 x 150mm	

Manometer/Manometers



Abb. Pict.	Bestell-Nr. Order-No.	Beschreibung Description	Gerätetyp Device type	Vergl.-Nr. Comp.-No.
1	541231	0 - 3bar 0 - 3bar		
2	541265	0 - 2,5bar, Ø40mm 0 - 2,5bar, Ø40mm	BZ 99	7432501



Abb. Pict.	Bestell-Nr. Order-No.	Beschreibung Description	Gerätetyp Device type	Vergl.-Nr. Comp.-No.
1	541259	Doppelskala Double scale	2000/3000 4000/BZ 40	7432503
2	541266	Doppelskala Double scale	ELLISSE	7432502

Ventile/Valves



Abb. Pict.	Bestell-Nr. Order-No.	Beschreibung Description	Vergl.-Nr. Comp.-No.
1	529312	Sicherheitsventil, 1,8bar, 3/8" Safety valve, 1,8bar, 3/8"	5965001
2	529316	Sicherheitsventil/plombiert, 1,8bar, 3/8" Safety valve/sealt, 1,8bar, 3/8"	
3	529303	Entlüftungsventil, 1/4" Empty valve, 1/4"	7452502
4	529349	Cu-Dichtung, 3/8" Cu-gasket, 3/8"	
5	529361	Cu-Dichtung, 1/4" Cu-gasket, 1/4"	

Ventile/Valves

2000/3000/4000/Verticale

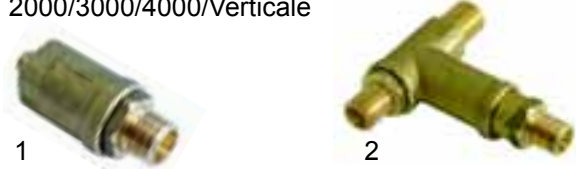


Abb. Pict.	Bestell-Nr. Order-No.	Beschreibung Description	Vergl.-Nr. Comp.-No.
1	528365	Rückschlagventil Non-return valve	5965013
2	528364	Expansionsventil Expansion valve	7452508 7452505

Ellisse



Abb. Pict.	Bestell-Nr. Order-No.	Beschreibung Description	Vergl.-Nr. Comp.-No.
1	528367	Rückschlagventil Non-return valve	5965002
2	528368	Rückschlagventil Non-return valve	5223018
3	528366	Expansionsventil Expansion valve	5965004 5965003

Ventile/Valves

BZ35/40



Abb. Pict.	Bestell-Nr. Order-No.	Beschreibung Description	Vergl.-Nr. Comp.-No.
1	528386	Rückschlagventil Non-return valve	5965020
2	528387	Expansionsventil Expansion valve	5965035 5965025

BZ99



Abb. Pict.	Bestell-Nr. Order-No.	Beschreibung Description	Vergl.-Nr. Comp.-No.
1	528369	Rückschlagventil Non-return valve	5965038
2	528370	Expansionsventil Expansion valve	5965036

Wasserstandsglas/Level glass

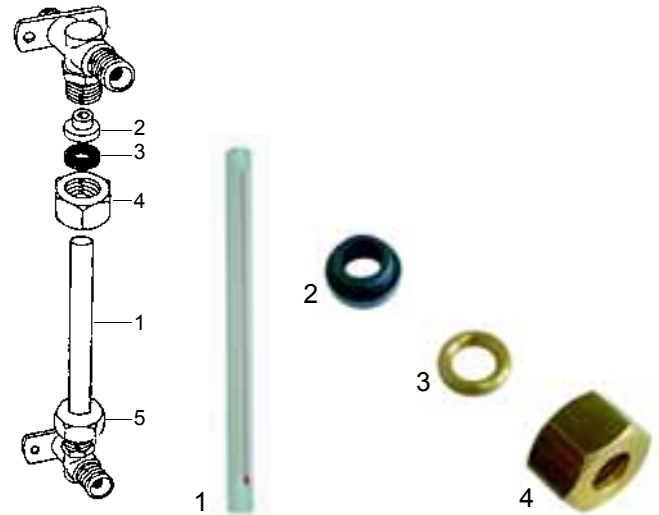


Abb. Pict.	Bestell-Nr. Order-No.	Beschreibung Description	Vergl.-Nr. Comp.-No.
1	529415	Wasserstandsglas, 135 x 12mm Level glass, 170 x 11mm	5430504
2	529416	Wasserstandsglasdichtung Level glass gasket	5493026
3	528361	Druckscheibe Pressure washer	5224802
4	528362	Überwurfmutter/oben Union nut/above	5221828

Passend für/Suitable for Bezzera

Wasserfüllventile/Water intake valves



Abb. Pict.	Bestell-Nr. Order-No.	Beschreibung Description	Vergl.-Nr. Comp.-No.
1	529657	Wasserfüllventil, 3 Wege Water intake valve, 3 ways	5964054
2	529659	Wasserfüllventil, 4 Wege Water intake valve, 4 ways	5964060



Abb. Pict.	Bestell-Nr. Order-No.	Beschreibung Description	Vergl.-Nr. Comp.-No.
1	529650	Wasserfüllventil komplett Water intake valve assembly	L1130B
2	111145	Griff Knob	7372001



Abb. Pict.	Bestell-Nr. Order-No.	Beschreibung Description	Vergl.-Nr. Comp.-No.
3	528371	Dichtungsträger Gasketholder	5224607
4	528372	Dichtung Gasket	5493013
5	528373	Dichtung (konisch) Gasket (conic)	5494004
6	528374	Druckscheibe Press washer	5220603
7	528375	Feder Spring	5471512

Hähne/Taps



Abb. Pict.	Bestell-Nr. Order-No.	Beschreibung Description	Vergl.-Nr. Comp.-No.
1	529652	Dampf/Wasserhahn kpl. Steam/Watertap cpl.	
2	111115	Knebel, Dampf Knob, steam	5973005
3	111116	Knebel, Wasser Knob, water	5973006



Abb. Pict.	Bestell-Nr. Order-No.	Beschreibung Description	Vergl.-Nr. Comp.-No.
4	528376	Dichtung Gasket	
5	528377	Druckscheibe Press washer	
6	528378	Feder/groß Spring/big	
7	528379	Feder/klein Spring/small	

Ellisse

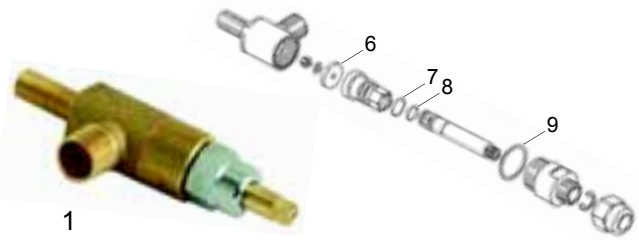


Abb. Pict.	Bestell-Nr. Order-No.	Beschreibung Description	Vergl.-Nr. Comp.-No.
1	529526	Hahn/kpl. Tap/cpl.	5974007 5974008 5974009 5974010



Abb. Pict.	Bestell-Nr. Order-No.	Beschreibung Description	Vergl.-Nr. Comp.-No.
2	111146	Knebel, Dampf (grau) Knob, steam (grey)	5973021
3	111147	Knebel, Wasser (grau) Knob, water (grey)	5973023
4	111148	Knebel, Dampf (blau) Knob, steam (blue)	5973022
5	111149	Knebel, Wasser (blau) Knob, water (blue)	5973024



Abb. Pict.	Bestell-Nr. Order-No.	Beschreibung Description	Vergl.-Nr. Comp.-No.
6	528380	Dichtung Gasket	5493023
7	528381	O-Ring O-ring	7496002
8	528382	O-Ring O-ring	7496003
9	528383	Dichtung Gasket	5495001

Hähne/Tabs

2000/3000/4000

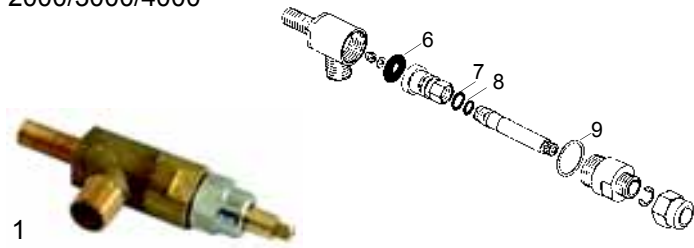


Abb. Pict.	Bestell-Nr. Order-No.	Beschreibung Description	Vergl.-Nr. Comp.-No.
1	529523	Dampf/Wasserhahn kpl. Steam/Watertap cpl.	5974006 5974005 5974018 5974019



Abb. Pict.	Bestell-Nr. Order-No.	Beschreibung Description	Vergl.-Nr. Comp.-No.
2	111115	Knebel, Dampf (2000/3000) Knob, steam (2000/3000)	5973005
3	111116	Knebel, Wasser (2000/3000) Knob, water (2000/3000)	5973006
4	111120	Knebel, Dampf (4000) Knob, steam (4000)	5973003
5	111121	Knebel, Wasser (4000) Knob, water (4000)	5973004



Abb. Pict.	Bestell-Nr. Order-No.	Beschreibung Description	Vergl.-Nr. Comp.-No.
6	528380	Dichtung Gasket	5493023
7	528381	O-Ring O-ring	7496002
8	528382	O-Ring O-ring	7496003
9	528383	Dichtung Gasket	5495001

Hähne/Tabs

BZ35/40/99

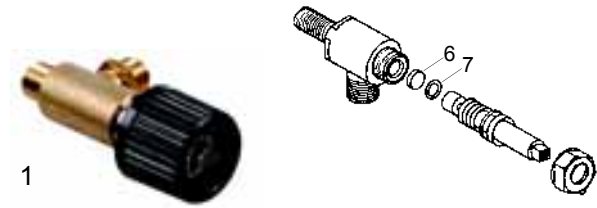


Abb. Pict.	Bestell-Nr. Order-No.	Beschreibung Description	Vergl.-Nr. Comp.-No.
1	529653	Hahn/kpl. Steam/cpl.	5974001 5974002 5974003 5974004



Abb. Pict.	Bestell-Nr. Order-No.	Beschreibung Description	Vergl.-Nr. Comp.-No.
2	111117	Knebel, Dampf, BZ35/99 Knob, steam, BZ35/99	5973001
3	111118	Knebel, Wasser, BZ35/99 Knob, water, BZ35/99	5973002
4	111120	Knebel, Dampf, BZ40 Knob, steam, BZ40	5973003
5	111121	Knebel, Wasser, BZ40 Knob, water, BZ40	5973004



Abb. Pict.	Bestell-Nr. Order-No.	Beschreibung Description	Vergl.-Nr. Comp.-No.
6	528384	Dichtung, 8 x 4mm Gasket, 8 x 4mm	5493001
7	528385	O-Ring, 7,6 x 2,62mm (Viton) O-ring, 7,6 x 2,62mm (Viton)	7496001

Passend für/Suitable for Bezzera 1

Rohre/Pipes 2000/3000/4000



Abb. Pict.	Bestell-Nr. Order-No.	Beschreibung Description	Vergl.-Nr. Comp.-No.
1	529654	Dampfrohr Steampipe	5966514
1	529760	Dampfrohr/CNS Steampipe/stainless steel	
2	529655	Wasserrohr Waterpipe	5966506
3	529726	Feder Spring	5471504
4	528226	O-Ring O-ring	7496016
5	529727	Buchse Bush	5224605
6	528218	Dichtung Gasket	5494002
7	529729	Überwurfmutter Union nut	5221824NC

BZ35/40/99



Abb. Pict.	Bestell-Nr. Order-No.	Beschreibung Description	Vergl.-Nr. Comp.-No.
1	529656	Dampfrohr Steampipe	5966503
2	529619	Wasserrohr Waterpipe	5966504
3	528219	O-Ring, 6 x 2mm (Viton) O-ring, 6 x 2mm (viton)	7496037

Rohre/Pipes

Ellisse



Abb. Pict.	Bestell-Nr. Order-No.	Beschreibung Description	Vergl.-Nr. Comp.-No.
1	529761	Dampfrohr Steampipe	5966502
1	529762	Dampfrohr (CNS) Steampipe (stainless steel)	
2	529763	Wasserrohr Waterpipe	5966501



Abb. Pict.	Bestell-Nr. Order-No.	Beschreibung Description	Vergl.-Nr. Comp.-No.
3	529726	Feder Spring	5471504
4	528226	O-Ring O-ring	7496016
5	529727	Buchse Bush	5224605
6	528218	Dichtung Gasket	5494002
7	529729	Überwurfmutter Union nut	5221824NC

Ablaufwanne/Drain tap



Abb. Pict.	Bestell-Nr. Order-No.	Beschreibung Description	Vergl.-Nr. Comp.-No.
1	528602	Ablaufwanne (2000-4000) Drain tap (2000-4000)	5373602
1	528604	Ablaufwanne (BZ35/40) Drain tap (BZ35/40)	5373603
2	528603	Ablaufwanne (Ellisse) Drain tap (Ellisse)	5374501
3	520072	Ablaufschlauch, 16 x 23mm, VPE 5m Outlet pipe, 16 x 23mm, packaging 5m	
3	520036	Ablaufschlauch, 16 x 23mm, VPE 30m Outlet pipe, 16 x 23mm, packaging 30m	

Gruppe/Group

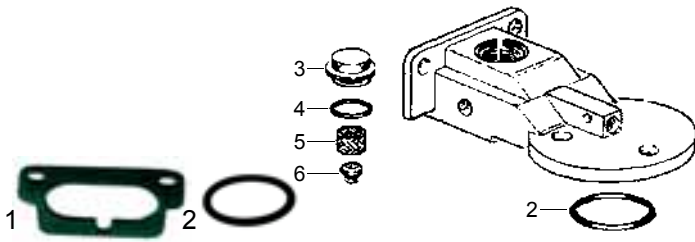


Abb. Pict.	Bestell-Nr. Order-No.	Beschreibung Description	Vergl.-Nr. Comp.-No.
1	528142	Gruppendichtung Group gasket	
2	528155	Glocken O-Ring Bell O-ring	7496004



Abb. Pict.	Bestell-Nr. Order-No.	Beschreibung Description	Vergl.-Nr. Comp.-No.
3	528316	Schraubkappe, M18 Screw cap, M18	5288001
4	528251	O-Ring Kappe O-ring cap	7496005
5	528317	Sieb Filter	5471002
6	528318	Düse, M5 Nozzle, M5	5223001

Siebträgerdichtungen/Holder gaskets



Abb. Pict.	B.-Nr. O.-No.	Beschreibung Description	Ver.-Nr. Com.-No.
1	528046	Distanzeinlage, 66x58mm Shirn gasket, 66x58mm	
2	528045	Siebträgerdichtung, O-Ring, 66x56x5,34mm Holder gasket/old, O-ring, 66x56x5,34mm	7496029



Abb. Pict.	Bestell-Nr. Order-No.	Beschreibung Description	Vergl.-Nr. Comp.-No.
1	528053	73 x 57 x 8mm	5493016
2	528054	72,5 x 56,5 x 8mm (BZ_)	5493034

Dusche, Blindfilter/Shower, blindfilter



Abb. Pict.	Bestell-Nr. Order-No.	Beschreibung Description	Vergl.-Nr. Comp.-No.
1	529084	Dusche, 51,5mm Shower, 51,5mm	5470504
2	529091	Dusche, 57mm Shower, 57mm	5470501
3	529023	Blindfilter Blindfilter	5471003

Sieb/Filter



Abb. Pict.	Bestell-Nr. Order-No.	Beschreibung Description	Vergl.-Nr. Comp.-No.
1	529012	Sieb/1 Tasse (6g) Filter/1 cup (6g)	5471010
1	529011	Sieb/1 Tasse (7g) Filter/1 cup (7g)	5471004
2	529014	Sieb/2 Tassen (12g) Filter/2 cups (12g)	5471007
2	529013	Sieb/2 Tassen (14g) Filter/2 cups (14g)	5471009
3	529079	Siebträgerfeder Filterholder spring	5471507

Siebträger/Filterholder



Abb. Pict.	Bestell-Nr. Order-No.	Beschreibung Description	Vergl.-Nr. Comp.-No.
1	529059	Siebträger M12 Filterholder M12	5286001CM
2	529044	Siebträgergriff M12 Filterholder handle M12	7371502



Abb. Pict.	Bestell-Nr. Order-No.	Beschreibung Description	Vergl.-Nr. Comp.-No.
1	529126	Siebträgergriff, grau, M12 Filterholder handle, grey, M12	5963013
2	529127	Siebträgergriff, blau, M12 Filterholder handle, blue, M12	5963016

Ausläufe/Spouts



Abb. Pict.	Bestell-Nr. Order-No.	Beschreibung Description	Vergl.-Nr. Comp.-No.
1	529001	Auslauf 3/8", 1 Weg lang Spout 3/8", one way long	7305005
2	529002	Auslauf 3/8", 1 Weg gebogen Spout 3/8", one way curved	7305002
3	529007	Auslauf 3/8", 2 Wege kurz Spout 3/8", two way short	7305003
4	529008	Auslauf 3/8", 2 Wege, 44mm Spout 3/8", two way, 44mm	7305001