

Magnetventile/Solenoid valves

Scem/Parker



| Abb. Pict. | Bestell-Nr. Order-No. | Beschreibung Description | Vergl.-Nr. Comp.-No. |
|------------|-----------------------|--|----------------------|
| 1 | 370057 | kpl., 3 Wege, 230VAC cpl., 3 ways, 230VAC | |
| 2 | 370062 | Ventilkörper Solenoid square pin | |
| 3 | 370206 | kpl., 1/8", 2 Wege, 230VAC cpl., 1/8", 2 ways, 230VAC | |
| 4 | 371029 | Magnetpule, 230VAC Magnetic coil, 230VAC | |

Lucifer



| Abb. Pict. | Bestell-Nr. Order-No. | Beschreibung Description | Vergl.-Nr. Comp.-No. |
|------------|-----------------------|--|----------------------|
| 1 | 370053 | kpl., 3 Wege, 230VAC cpl., 3 ways, 230VAC | |
| 2 | 370061 | Ventilkörper Solenoid square pin | |
| 3 | 371031 | Spule, 230VAC Coil, 230VAC | |

ODE



| Abb. Pict. | Bestell-Nr. Order-No. | Beschreibung Description | Vergl.-Nr. Comp.-No. |
|------------|-----------------------|--|----------------------|
| 1 | 370203 | kpl., 3 Wege, 230VAC cpl., 3 ways, 230VAC | |
| 2 | 371150 | Magnetspule, 230VAC Magnetic coil, 230VAC | |
| 3 | 370168 | 1/8", 2 Wege, 230VAC 1/8", 2 ways, 230VAC | |
| 4 | 371071 | Magnetspule, 230VAC Magnetic coil, 230VAC | |

Sirai

Magnetventile Zubehör/Solenoid valve accessories



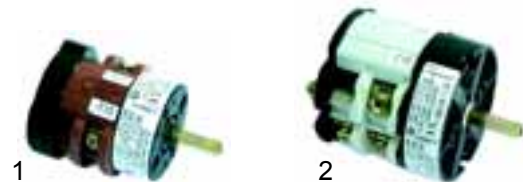
| Abb. Pict. | Bestell-Nr. Order-No. | Beschreibung Description | Vergl.-Nr. Comp.-No. |
|------------|-----------------------|----------------------------------|----------------------|
| 1 | 371091 | Stecker/klein Plug/small | |
| 2 | 371090 | Stecker/groß Plug/big | |
| 3 | 371095 | O-Ring/viton O-Ring/viton | |
| 4 | 371100 | O-Ring/Silikon O-Ring/Silicon | |

Pressostate/Pressure switches



| Abb. Pict. | Bestell-Nr. Order-No. | Beschreibung Description | Vergl.-Nr. Comp.-No. |
|------------|-----------------------|---|----------------------|
| 1 | 541021 | Pressostat, 3-pol Pressure switch, 3 poles | W10440 |
| 2 | 541089 | Pressostat, 1-pol Pressure switch, 1 pole | |

Hauptschalter/Main switches

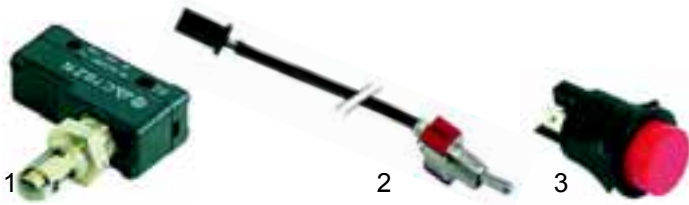


| Abb. Pict. | Bestell-Nr. Order-No. | Beschreibung Description | Vergl.-Nr. Comp.-No. |
|------------|-----------------------|--------------------------|----------------------|
| 1 | 346104 | 0 - I, 20A | W10734 |
| 2 | 346105 | 0 - I, 32A | |



| Abb. Pict. | Bestell-Nr. Order-No. | Beschreibung Description | Vergl.-Nr. Comp.-No. |
|------------|-----------------------|--------------------------|----------------------|
| 1 | 346100 | I - 0 - II, 20A | W10735 |
| 2 | 346101 | I - 0 - II, 32A | W10833 |
| 3 | 110205 | Knebel Knob | W10744 |

1 Hauptschalter/Main switches



| Abb. Pict. | Bestell-Nr. Order-No. | Beschreibung Description | Gerätetyp Device type | Vergl.-Nr. Comp.-No. |
|------------|-----------------------|-------------------------------|-----------------------|----------------------|
| 1 | 346055 | Mikroschalter Micro switch | | |
| 2 | 346136 | Kippschalter Tumbler | | |
| 3 | 345037 | Schalter Switch | Orion | W10963 |

Niveauregler/Level controller



| Abb. Pict. | Bestell-Nr. Order-No. | Beschreibung Description |
|------------|-----------------------|--|
| 1 | 400017 | Niveauregler, RL30/1E-2C/11, 230V Level controller, RL30/1E-2C/11, 230V |
| 2 | 400230 | Niveauregler, RL40/1E/11, 230V Level controller, RL40/1E/11, 230V |
| 3 | 380136 | Socket, 11-polig Base, 11 poles |

Schalter/Switches

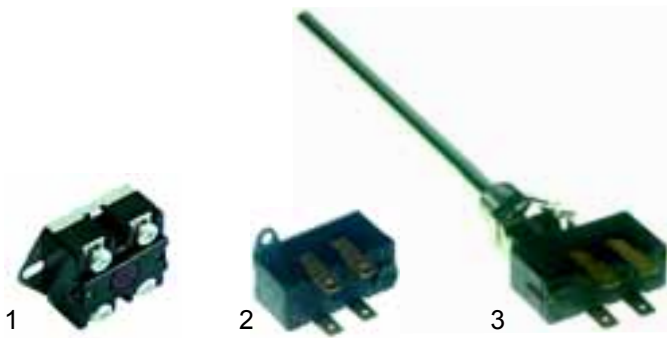


| Pos. Item | Bestell-Nr. Order-No. | Beschreibung Description | Einbaumaß Socket dim. |
|-----------|-----------------------|------------------------------------|-----------------------|
| 1 | 301002 | Schalter, 2-pol Switch, 2 poles | 30 x 22mm |



| Abb. Pict. | Bestell-Nr. Order-No. | Beschreibung Description | Gerätetyp Device type | Vergl.-Nr. Comp.-No. |
|------------|-----------------------|--|-----------------------|----------------------|
| 1 | 400019 | RL30/1E-2C/F, 230V | | W10769 |
| 2 | 400530 | RMF-C2SN, 230V | Mini Wega | W1018044 |
| 3 | 400020 | Niveausonde, 150mm Level probe, 150mm | | |

Thermostate/Thermostates



| Abb. Pict. | Bestell-Nr. Order-No. | Beschreibung Description | Vergl.-Nr. Comp.-No. |
|------------|-----------------------|------------------------------|----------------------|
| 1 | 390431 | 2 polig, 40A 2 poles, 40A | W05154 |
| 2 | 390434 | 2 polig, 20A 2 poles, 20A | |
| 3 | 390433 | 2 polig, 20A 2 poles, 20A | W10785 |



| Abb. Pict. | Bestell-Nr. Order-No. | Beschreibung Description | Gerätetyp Device type | Vergl.-Nr. Comp.-No. |
|------------|-----------------------|--------------------------|-----------------------|----------------------|
| 1 | 400537 | RL/1E-2C/F Time Out | Orion | W10738 |
| 2 | 400538 | LED Time Out | Sphera | |

Flowmeter/Flowmeter



| Abb. Pict. | Bestell-Nr. Order-No. | Beschreibung Description | Vergl.-Nr. Comp.-No. |
|------------|-----------------------|------------------------------------|----------------------|
| 1 | 400004 | Flowmeter, 1/4" Flowmeter, 1/4" | W10785 |
| 2 | 400256 | Stecker Plug | |
| 3 | 400257 | Zählrad Flowmeter reel | W10718 |
| 4 | 400258 | Gehäusedichtung Case gasket | W10717 |

Tastaturen/Key push buttons



| Pos. Item | Best.-Nr. Ord.-No. | Beschreibung Description | Gerätetyp Device type | V.-Nr. C.-No. |
|-----------|--------------------|---|-----------------------|------------------|
| 1 | 400506 | Tastatur, 9.9.11.34 Key push button, 9.9.11.34 | Nova, Antares | W11100 W18357 |



| Abb. Pict. | Best.-Nr. Ord.-No. | Beschreibung Description | Gerätetyp Device type | V.-Nr. C.-No. |
|------------|--------------------|---|-----------------------------|---------------|
| 1 | 400354 | Tastatur/5 Tasten Keyboard/5 push buttons | Eco, Junior, Airy, Atlas | W10839 |
| 2 | 400355 | Tastatur/6 Tasten, DOS.TH 1Gr.+RL Keyboard/6 push buttons DOS.TH 1Gr.+RL | | W10772 |

Tastaturen (Sphera)/Key push buttons (Sphera)



| Abb. Pict. | B.-Nr. O.-No. | Beschreibung Description | Gerätetyp Device type | V.-Nr. C.-No. |
|------------|---------------|--|-----------------------|---------------|
| 1 | 400510 | Tastatur (Wasser) Key push button (water) | Sphera | W5092 |
| 2 | 400511 | Tastatur (EVD) Key push button (EVD) | | W5093 |
| 3 | 400512 | Tastatur (Wasser), 1 Gr. Key push button (water), 1 gr. | | W5094 |



| Abb. Pict. | B.-Nr. O.-No. | Beschreibung Description | Gerätetyp Device type | V.-Nr. C.-No. |
|------------|---------------|---|-----------------------|---------------|
| 1 | 400513 | Tastatur (Tassenwärmer) Key push button (Cup warmer) | | W5249 |
| 2 | 400514 | Tastatur (EPU) Key push button (EPU) | | W5250 |
| 3 | 400515 | Tastatur (TRON) Key push button (TRON) | | W7000 |

Elektronik/Electronics



| Abb. Pict. | B.-Nr. O.-No. | Beschreibung Description | Gerätetyp Device type | V.-Nr. C.-No. |
|------------|---------------|---|-----------------------|---------------|
| 1 | 400379 | Gieme, 1 - 3 Gruppen Gieme, 1 - 3 groups | Sphera | W5086 |
| 2 | 400544 | Gicar, 1 - 3 Gruppen, 9.5.21.12 Gicar, 1 - 3 groups, 9.5.21.12 | | |
| 2 | 400539 | Gicar, 1 - 3 Gruppen, 9.5.21.16 Gicar, 1 - 3 groups, 9.5.21.16 | | |

1 Heizkörper/Heaters



| Abb. Pict. | Bestell-Nr. Order-No. | Beschreibung Description | Vergl.-Nr. Comp.-No. |
|------------|-----------------------|---|----------------------|
| 1 | 417043 | 1 Gruppe, 1800W, 230V/400V 1 group, 1800W, 230V/400V | W10451 |
| 2 | 417154 | 1 Gruppe, 2700W, 230V/400V 1 group, 2700W, 230V/400V | W05151 |
| 2 | 417042 | 2 Gruppen, 2600W, 230V/400V 2 groups, 2600W, 230V/400V | W10456 |
| 2 | 417155 | 2 Gruppen, 3000W, 230V 2 groups, 3000W, 230V | W05152 |
| 3 | 417156 | 3 Gruppen, 3700W, 230V 3 groups, 3700W, 230V | W10461 |
| 3 | 417157 | 3 Gruppen, 5000W, 230V 3 groups, 5000W, 230V | W10466 |



| Abb. Pict. | Bestell-Nr. Order-No. | Beschreibung Description | V.-Nr. C.-No. |
|------------|-----------------------|---|---------------|
| 1 | 417090 | (Junior), 1500W, 230V (Junior), 1500W, 230V | |
| 2 | 417089 | (Mini, Wega), 1300W, 230V (Mini, Wega), 1300W, 230V | W17201 |
| 3 | 528001 | Heizkörperdichtung/Klingerit Heater gasket/Klingerit | |
| 3 | 528002 | Heizkörperdichtung/Teflon Heater gasket/teflon | W10470 |
| 4 | 528021 | Heizkörperdichtung/Teflon (Mini, Wega) Heater gasket/teflon (Mini, Wega) | |

Kesseldichtungen/Pot gaskets



| Abb. Pict. | Bestell-Nr. Order-No. | Beschreibung Description |
|------------|-----------------------|--|
| 1 | 528150 | Kesseldichtung Pot gasket |
| 2 | 528151 | Kesseldichtung/Teflon Pot gasket/teflon |

Manometer/Manometer



| Pos. Item | Bestell-Nr. Order-No. | Beschreibung Description | Vergl.-Nr. Comp.-No. |
|-----------|-----------------------|---|----------------------|
| 1 | 541223 | Manometer/Doppelskala Manometer/double scale | W10790 |

Ventile/Valves

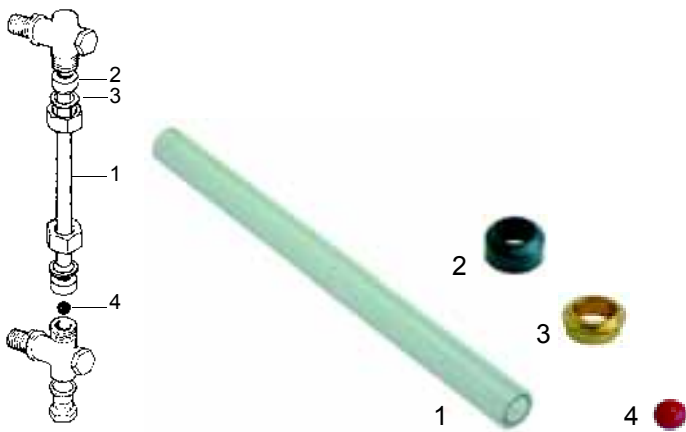


| Abb. Pict. | Bestell-Nr. Order-No. | Beschreibung Description |
|------------|-----------------------|--|
| 1 | 529312 | Sicherheitsventil, 1,8bar, 3/8" Safety valve, 1,8bar, 3/8" |
| 2 | 529316 | Sicherheitsventil/verplombt, 1,8bar, 3/8" Safety valve/sealed, 1,8bar, 3/8" |
| 3 | 529303 | Entlüftungsventil/CNS, 1/4" Empty valve/stainless steel, 1/4" |
| 4 | 529304 | Entlüftungsventil, 1/4" Empty valve, 1/4" |
| 5 | 529361 | Cu-Dichtung, 1/4" Cu-gasket, 1/4" |
| 6 | 529349 | Cu-Dichtung, 3/8" Cu-gasket, 3/8" |



| Abb. Pict. | Bestell-Nr. Order-No. | Beschreibung Description |
|------------|-----------------------|--|
| 1 | 528790 | Rückschlagventil, 3/8" Non-return valve, 3/8" |
| 2 | 528936 | Expansionsventil Expansion valve |
| 3 | 528937 | Expansionsventil (regulierbar) Expansion valve (adjustable) |

Wasserstandsglas/Level glass

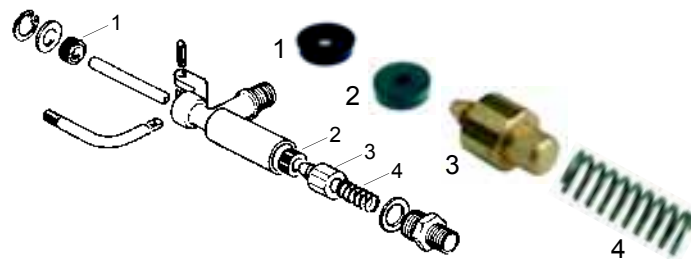


| Abb. Pict. | Bestell-Nr. Order-No. | Beschreibung Description | Vergl.-Nr. Comp.-No. |
|------------|-----------------------|---|----------------------|
| 1 | 529407 | Wasserstandsglas, 170 x 11mm Level glass, 170 x 11mm | W10559 |
| 2 | 529408 | Wasserstandsglasdichtung Level glass gasket | W10557 |
| 3 | 529409 | Druckscheibe Pressure washer | W10560 |
| 4 | 529355 | Plastikkugel Plastic ball | W10561 |

Wasserfüllventile/Water intake valves



| Abb. Pict. | Bestell-Nr. Order-No. | Beschreibung Description | Vergl.-Nr. Comp.-No. |
|------------|-----------------------|---|----------------------|
| 1 | 529631 | Wasserfüllventil/kl. Water intake valve/cpl. | |
| 2 | 529632 | Wasserfüllventil/kl. Water intake valve/cpl. | W05166 |
| 3 | 111092 | Griff Handle | W10518 |



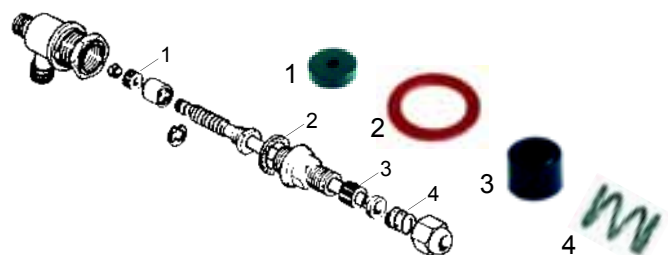
| Abb. Pict. | Bestell-Nr. Order-No. | Beschreibung Description | Vergl.-Nr. Comp.-No. |
|------------|-----------------------|---------------------------------|----------------------|
| 1 | 528309 | Dichtung Gasket | W10527 |
| 2 | 528308 | Kolbendichtung Piston gasket | W10652 |
| 3 | 528310 | Kolben Piston | W10546 |
| 4 | 528311 | Feder Spring | W10545 |

Hähne/Taps



| Abb. Pict. | Best.-Nr. Ord.-No. | Beschreibung Description | Gerätetyp Device type | V.-Nr. C.-No. |
|------------|--------------------|--|-----------------------|--------------------|
| 1 | 529621 | Hahn/kpl. (Dampf/Wasser) Tap/cpl. (steam/water) | | W10582 + W10565 |
| 2 | 111090 | Knebel (Dampf) Knob/cpl. (steam) | Orion | W10569 |
| 3 | 111156 | Knebel (Wasser) Knob (water) | Orion | W10568 |
| 4 | 111091 | Knebel (Dampf) Knob (steam) | | |
| 5 | 111152 | Knebel (Wasser) Knob (water) | | |
| 6 | 111158 | Knebel (Dampf), 45mm Knob (steam), 45mm | Atlas | W10572 |
| 7 | 111157 | Knebel (Wasser), 45mm Knob (water), 45mm | Atlas | W10571 |

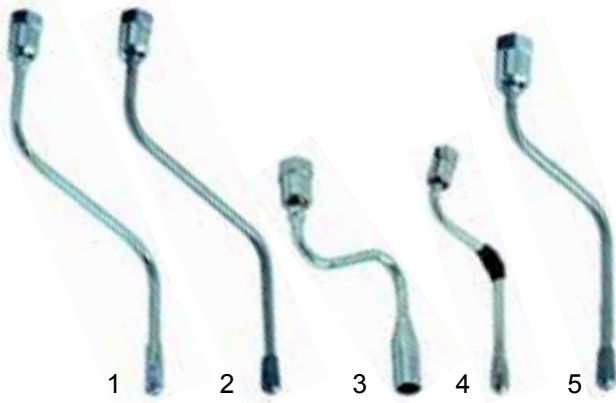
Hähne/Taps



| Abb. Pict. | Bestell-Nr. Order-No. | Beschreibung Description | Vergl.-Nr. Comp.-No. |
|------------|-----------------------|--|----------------------|
| 1 | 528308 | Dichtung, 15 x 4 x 4mm Gasket, 15 x 4 x 4mm | W10652 |
| 2 | 528312 | Dichtung Gasket | W10649 |
| 3 | 528313 | Wellendichtung Shaft gasket | W10653 |
| 4 | 529719 | Feder Spring | W10648 |

Passend für/Suitable for Wega

1 Rohre/Pipes



| Abb. Pict. | Bestell-Nr. Order-No. | Beschreibung Description | Gerätetyp Device type | V.-Nr. C.-No. |
|------------|-----------------------|--|-----------------------|---------------|
| 1 | 529775 | Dampfrohr Steampipe | | |
| 2 | 529773 | Dampfrohr/CNS Steampipe/stainless steel | | |
| 3 | 529860 | Wasserrohr Waterpipe | | |
| 4 | 529778 | Dampfrohr Steampipe | Spera | |
| 5 | 529777 | Dampfrohr Steampipe | ECO Plus | W10439 |

Rohr-Zubehör/Pipe accessories



| Abb. Pict. | Best.-Nr. Ord.-No. | Beschreibung Description | Gerätetyp Device type | Vergl.-Nr. Comp.-No. |
|------------|--------------------|--|-----------------------|----------------------|
| 1 | 528210 | Dichtung/Klingerit Gasket/klingerit | | W10650 |
| 1 | 528314 | Dichtung/Teflon Gasket/teflon | | |
| 2 | 529719 | Feder Spring | | W10648 |
| 3 | 529718 | Pressscheibe Pressure washer | | W10574 |
| 4 | 529412 | O-Ring O-ring | | W10675 |
| 5 | 528938 | Überwurfmutter Union nut | | |
| 6 | 529735 | Feder Spring | Spera, ECO Plus | W05158 |
| 7 | 529738 | Buchse Bush | Spera, ECO Plus | W05157 |
| 8 | 529739 | O-Ring O-ring | Spera, ECO Plus | W05156 |

Rohre/Pipes



| Pos. Item | Bestell-Nr. Order-No. | Beschreibung Description | Gerätetyp Device type |
|-----------|-----------------------|------------------------------|-----------------------|
| 1 | 529770 | Dampfhahn, cpl. Steam tap | Mini Wega |
| 2 | 111151 | Knebel Knob | Mini Wega |

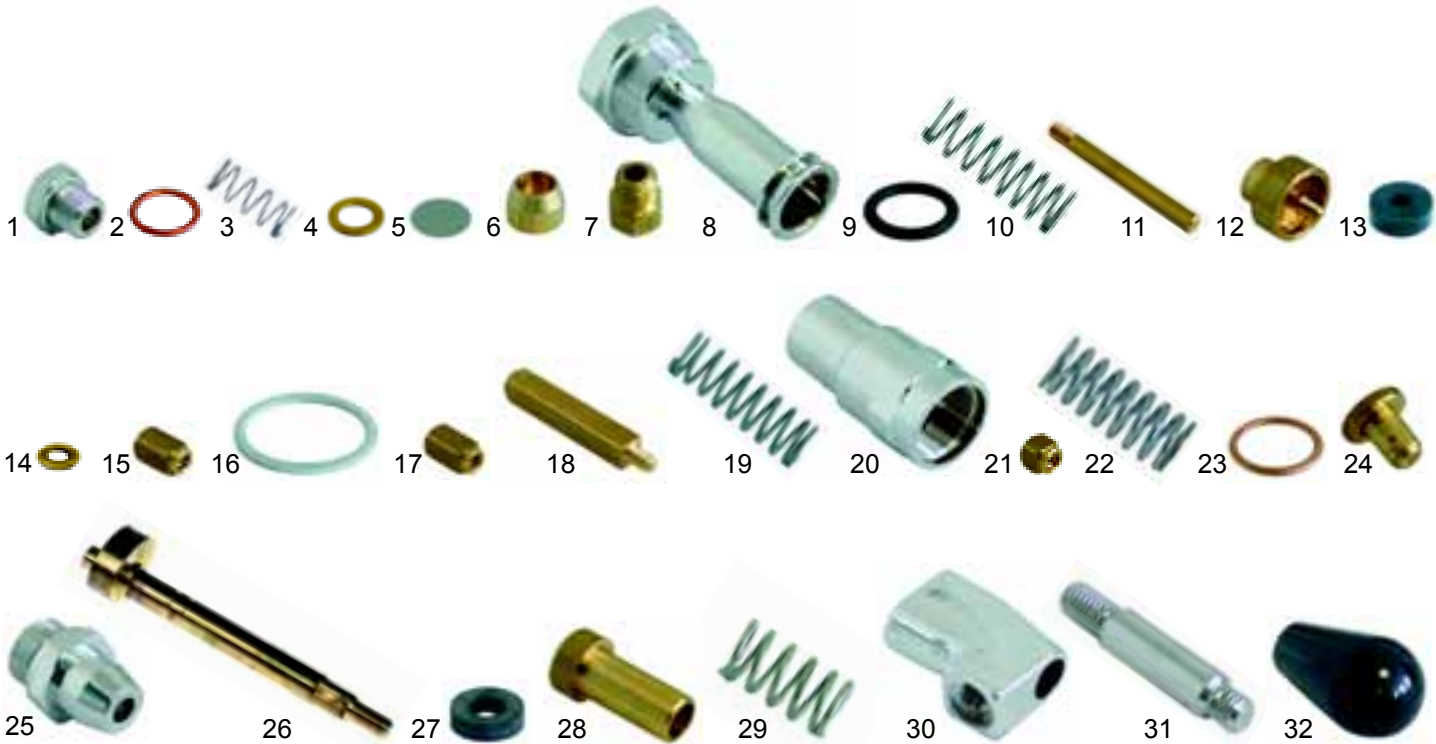
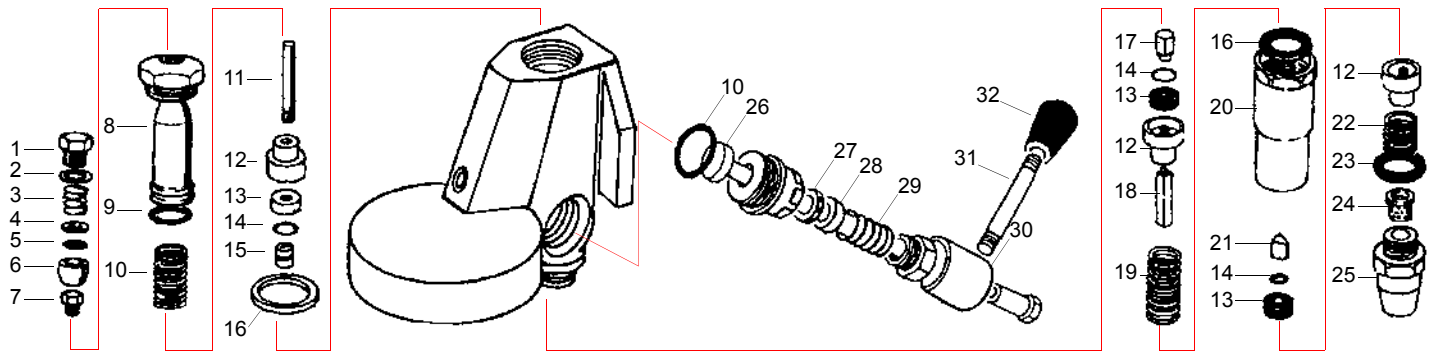
Ablaufwanne/Drain tap



| Pos. Item | Bestell-Nr. Order-No. | Beschreibung Description | Vergl.-Nr. Comp.-No. |
|-----------|-----------------------|---|----------------------|
| 1 | 528600 | Ablaufwanne Drain tap | W10795 |
| 2 | 520072 | Ablaufschlauch, 3/8", VPE 5m Outflow hose, 3/8", pack 5m | |
| 2 | 520036 | Ablaufschlauch, 3/8", VPE 30m Outflow hose, 3/8", pack 30m | |

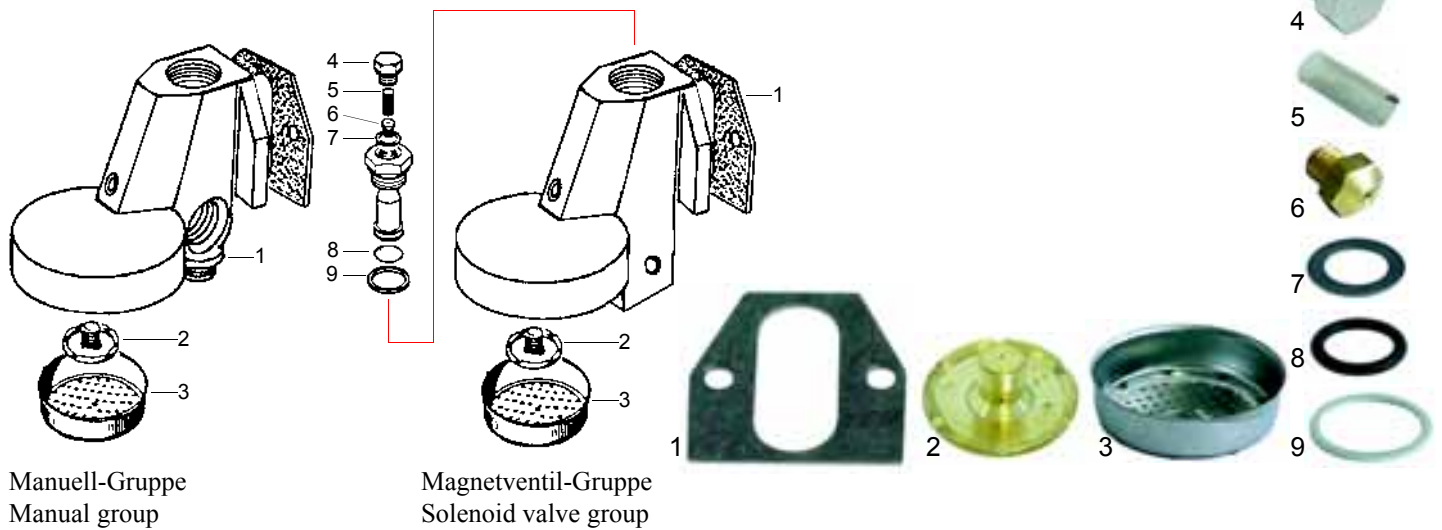
Gruppe/Group

1
Passend für/Suitable for Wega



| Abb. Pict. | Bestell-Nr. Order-No. | Beschreibung Description | Abb. Pict. | Bestell-Nr. Order-No. | Beschreibung Description | Abb. Pict. | Bestell-Nr. Order-No. | Beschreibung Description |
|------------|-----------------------|--------------------------|------------|-----------------------|--|------------|-----------------------|--|
| 1 | 528519 | Endkappe Ending cap | 12 | 528528 | Buchse Bush | 23 | 528508 | Cu-Dichtung Cu-gasket |
| 2 | 528520 | Cu-Dichtung Cu-gasket | 13 | 528494 | Dichtung, 13 x 4 x 4mm Gasket, 13 x 4 x 4mm | 24 | 528537 | Strahlbrecher Perlator |
| 3 | 528521 | Feder Spring | 14 | 528529 | Scheibe Washer | 25 | 528538 | Ablaufendstück Drain end part |
| 4 | 528522 | Scheibe Washer | 15 | 528530 | Hutmutter, 11mm Hat nut, 11mm | 26 | 528939 | Welle, exzentrisch Shaft, eccentric |
| 5 | 528326 | Filter Filter | 16 | 528524 | Dichtung (Teflon) Gasket (teflon) | 27 | 528495 | Dichtung Gasket |
| 6 | 528321 | Buchse Bush | 17 | 528531 | Hutmutter, 12mm Hat nut, 12mm | 28 | 528541 | Buchse Bush |
| 7 | 528486 | Düse Nozzle | 18 | 528532 | Schraube/lang, Infusion Srew/long, infusion | 29 | 528542 | Feder Spring |
| 8 | 528523 | Trompete Trumpet | 19 | 528533 | Feder Spring | 30 | 528940 | Hebel Lever |
| 9 | 528525 | O-Ring O-ring | 20 | 528534 | Kollektor Commutator | 31 | 528941 | Griffstange Handle rod |
| 10 | 528526 | Feder Spring | 21 | 528535 | Hutmutter Hat nut | 32 | 528942 | Griff Handle |
| 11 | 528527 | Welle Shaft | 22 | 528475 | Feder Spring | | | |

Gruppe/Group



Manuell-Gruppe
Manual group

Magnetventil-Gruppe
Solenoid valve group

| Abb. Pict. | Bestell-Nr. Order-No. | Beschreibung Description | Vergl.-Nr. Comp.-No. |
|------------|-----------------------|---------------------------------|----------------------|
| 1 | 528943 | Gruppendichtung Group gasket | |
| 2 | 529081 | Verteiler Divider | W10320 |
| 3 | 529080 | Dusche Shower | W10401 |
| 4 | 528944 | Schraubkappe Screw cap | W10306 |
| 5 | 528946 | Filter Sieve | W10307 |

| Abb. Pict. | Bestell-Nr. Order-No. | Beschreibung Description | Vergl.-Nr. Comp.-No. |
|------------|-----------------------|--------------------------|----------------------|
| 6 | 528947 | Düse Nozzle | W10308 |
| 7 | 528945 | Dichtung Gasket | W10309 |
| 8 | 528525 | O-Ring O-ring | W10311 |
| 9 | 528524 | Dichtung Gasket | W10643 |

Siebträgerdichtungen, Filter/Filter holder gaskets, filters



| Abb. Pict. | Bestell-Nr. Order-No. | Beschreibung Description | Vergl.-Nr. Comp.-No. |
|------------|-----------------------|--|----------------------|
| 1 | 528033 | Distanzeinlage, 71 x 68mm Shim gasket, 71 x 68mm | |
| 2 | 528030 | Siebträgerdichtung, 73 x 57 x 8mm Filter holder gasket, 73 x 57 x 8mm | W10321 |
| 2 | 528031 | Siebträgerdichtung, 73 x 57 x 8,5mm Filter holder gasket, 73 x 57 x 8,5mm | W10323 |
| 2 | 528032 | Siebträgerdichtung, 73 x 57 x 9mm Filter holder gasket, 73 x 57 x 9mm | W10322 |
| 3 | 529012 | Sieb, 1 Tasse (6g) Filter, 1 cup (6g) | |

| Abb. Pict. | Bestell-Nr. Order-No. | Beschreibung Description | Vergl.-Nr. Comp.-No. |
|------------|-----------------------|--|----------------------|
| 3 | 529011 | Sieb, 1 Tasse (7g) Filter, 1 cup (7g) | W10325 |
| 4 | 529014 | Sieb, 2 Tassen (12g) Filter, 2 cups (12g) | |
| 4 | 529013 | Sieb, 2 Tassen (14g) Filter, 2 cups (14g) | W10326 |
| 5 | 529023 | Blindfilter Blindfilter | |
| 6 | 529079 | Filterfeder Filter spring | W10327 |

Siebträger/Filter holder



| Abb. Pict. | Bestell-Nr. Order-No. | Beschreibung Description | Vergl.-Nr. Comp.-No. |
|------------|-----------------------|---|----------------------|
| 1 | 529058 | Siebträger, 3/8", M12 Filter holder, 3/8", M12 | W11775 |
| 2 | 529068 | Siebträgergriff, M12 Filter holder handle, M12 | W10329 |

| Abb. Pict. | Bestell-Nr. Order-No. | Beschreibung Description | Vergl.-Nr. Comp.-No. |
|------------|-----------------------|---|----------------------|
| 3 | 529045 | Siebträgergriff, M12 Filter holder handle, M12 | |

Ausläufe/Spouts



| Abb. Pict. | Bestell-Nr. Order-No. | Beschreibung Description | Vergl.-Nr. Comp.-No. |
|------------|-----------------------|---|----------------------|
| 1 | 529002 | 3/8", 1 Weg, gerade/kurz 3/8", 1 way, straight/short | |
| 2 | 529001 | 3/8", 1 Weg, gerade/lang 3/8", 1 way, straight/long | |
| 3 | 529005 | 3/8", 1 Weg, gebogen/kurz 3/8", 1 way, curved/short | |
| 4 | 529003 | 3/8", 1 Weg, gebogen/lang 3/8", 1 way, curved/long | |

| Abb. Pict. | Bestell-Nr. Order-No. | Beschreibung Description | Vergl.-Nr. Comp.-No. |
|------------|-----------------------|--|----------------------|
| 5 | 529004 | 3/8", 1 Weg, gebogen/geschlossen 3/8", 1 way, curved/closed | W10670 |
| 6 | 529008 | 3/8", 2 Wege, Abstand 44mm 3/8", 2 ways, distance 44mm | |
| 7 | 529007 | 3/8", 2 Wege, Abstand 55mm/kurz 3/8", 2 ways, distance 55mm/short | W10671 |
| 8 | 529006 | 3/8", 2 Wege, Abstand 55mm/lang 3/8", 2 ways, distance 55mm/long | |